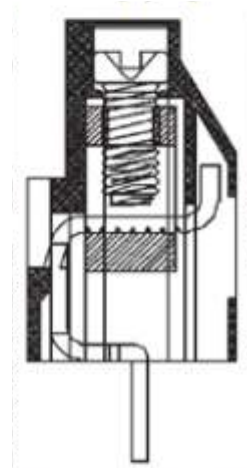
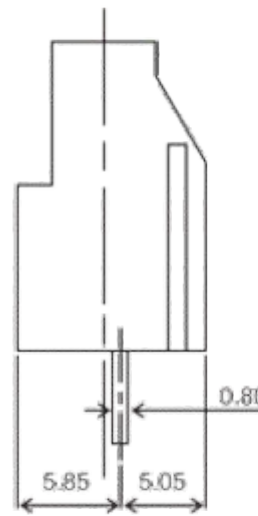
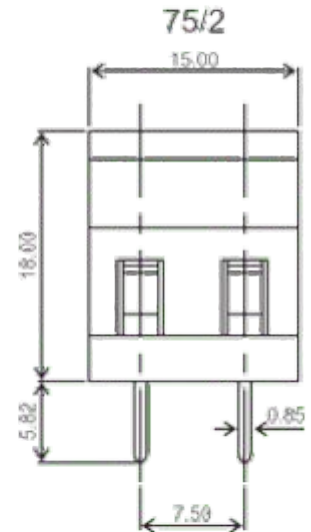
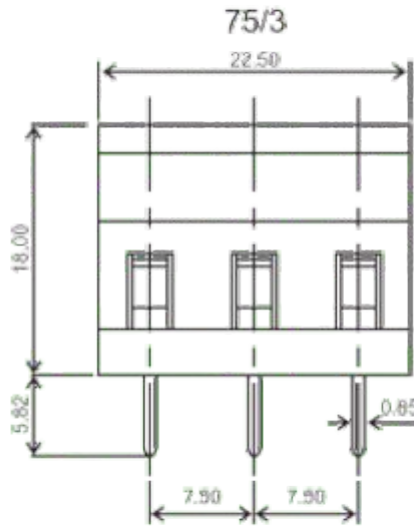




Manufacturer of PCB Terminal Blocks, Fuse Holders, Barrier Terminals, & Switches

Screw Type (Cage-Clamp Design) Connectors

Series 75
[Model : 75/2, 75/3]



TECHNICAL SPECIFICATIONS :

Pitch	: 7.50 mm
Nominal Rating	: 15A/450V or 24A/300V
Dielectric Strength	: > 2kV
Moulded Material	: PA66 - UL94 V0 or V2
Insulation Resistance	: > 1000 M Ω @ 500 Vdc
Terminal	: Tin Plated Copper Alloy
Wire Cage	: Nickel Plated Brass
Screw	: M3 x 0.50 mm
	: Brass Nickel Plated Suffix "P" : MS Trivalent Zinc Plated Suffix "C"
Wire Size	: 2.5 mm ²
Maximum Torque	: 0.50 - 0.60 Nm

Approval Data

UL : 300V / 20A / 26-12 AWG
cUL : 300V / 20A / 26-12 AWG
CE : 300V / 25A / 26-12 AWG

ORDERING CODE

Series	Poles	Grade
--------	-------	-------

→ 75/2 P ←

Number of Poles: 2 or 3
Grade : P or C

P = Professional Grade
C = Economy Grade