

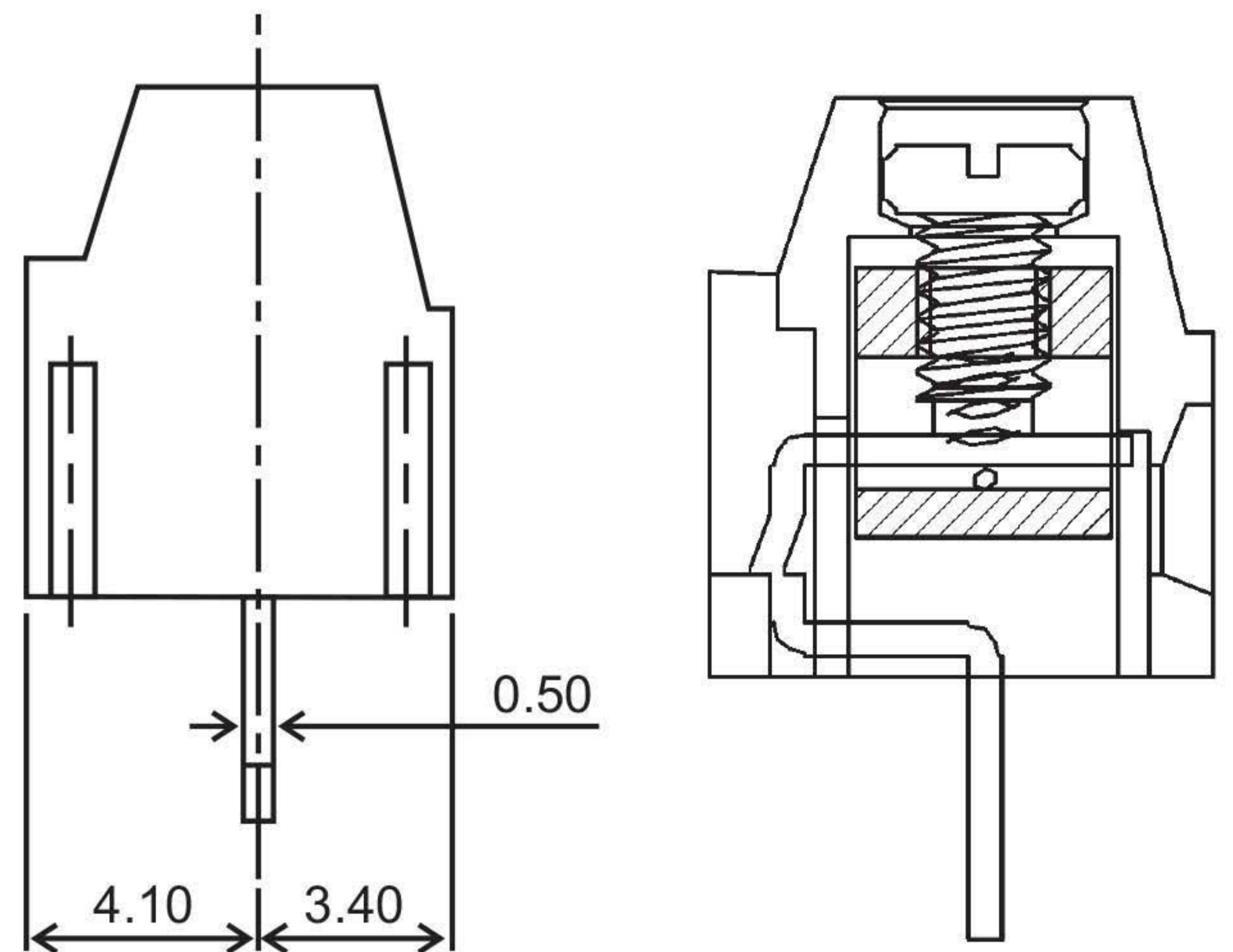
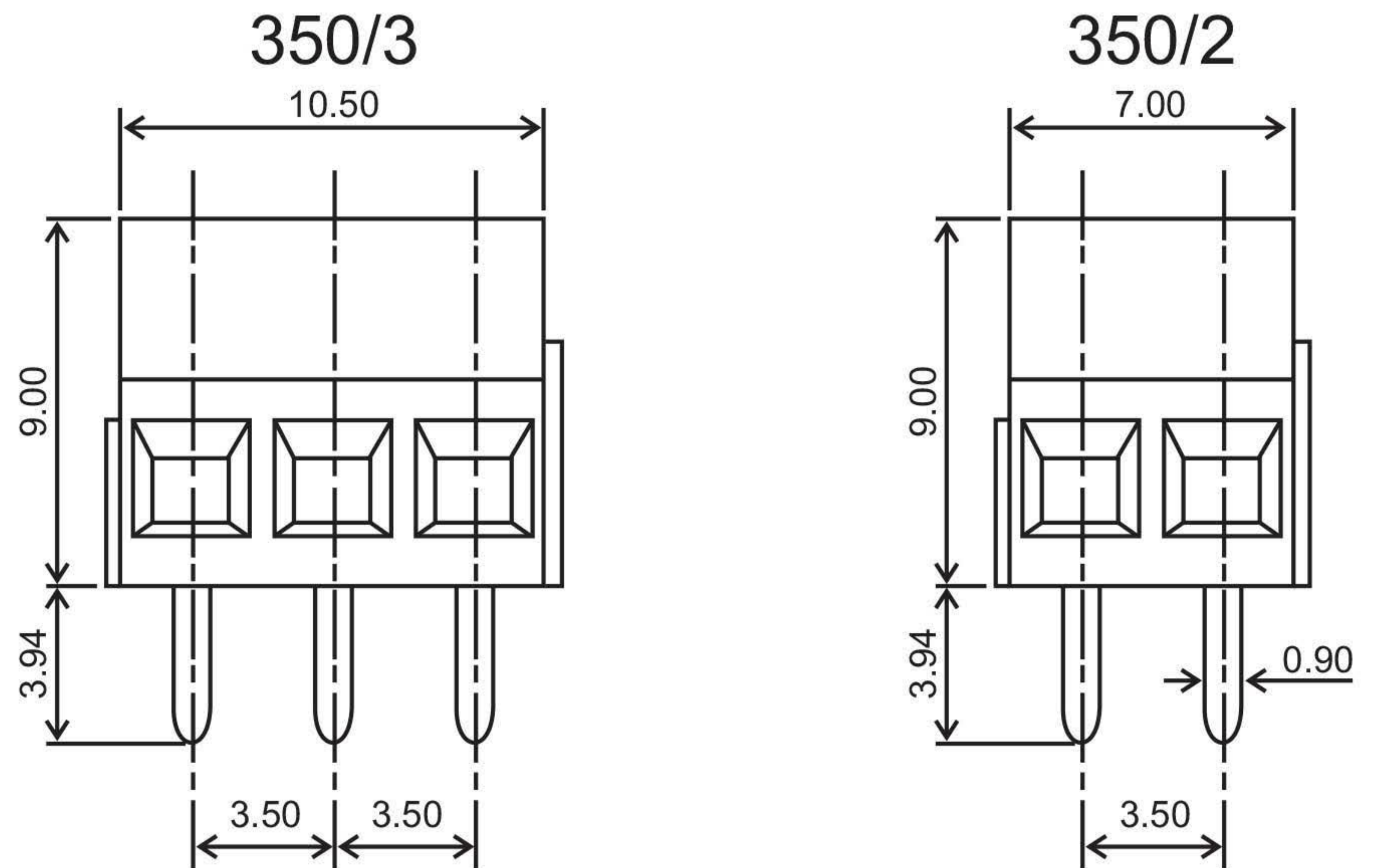


Manufacturer of PCB Terminal Blocks, Fuse Holders, Barrier Terminals, & Switches

Screw Type (Cage-Clamp Design) Connectors

Series 350

[Model : 350/2, 350/3]



TECHNICAL SPECIFICATIONS :

Pitch	: 3.50 mm
Nominal Rating	: 10A/250V
Dielectric Strength	: >1.5 kV
Moulded Material	: PA66 - UL94 V0 or V2
Insulation Resistance	: > 1000 M Ω @ 500 Vdc
Terminal	: Tin Plated Copper Alloy
Wire Cage	: Nickel Plated Brass
Screw	: M2 x 0.4mm
	: Brass Nickel Plated Suffix "P"
	: MS Trivalent Zinc Plated Suffix "C"
Wire Size	: 0.5 mm ²
Maximum Torque	: 0.10 - 0.12 Nm

ORDERING CODE

Series	Poles	Grade
--------	-------	-------

→ 350/2 P ←

Number of Poles: 2 or 3
Grade : P or C

P = Professional Grade
C = Economy Grade

Approval Data

UL : Under Testing
cUL : Under Testing
CE : 10A/250V