

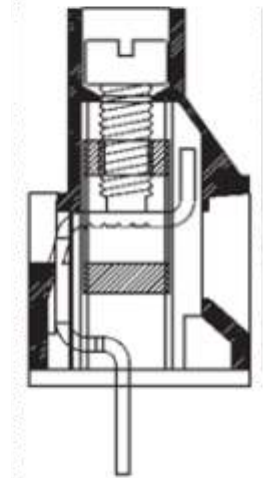
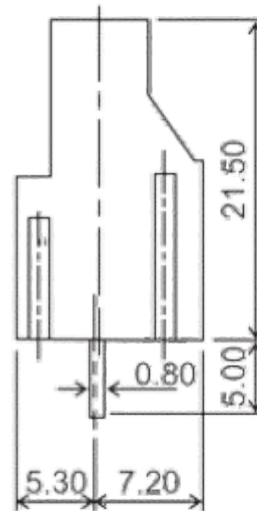
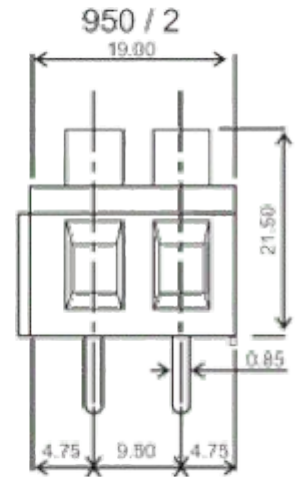
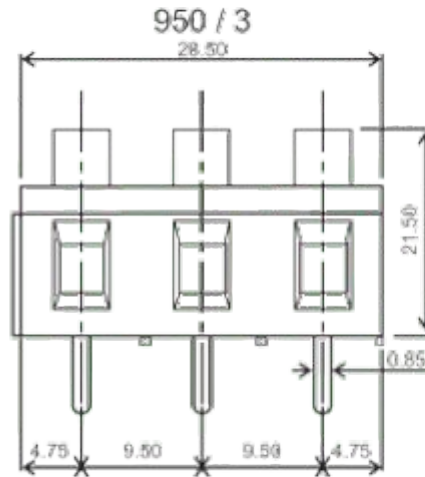


Manufacturer of PCB Terminal Blocks, Fuse Holders, Barrier Terminals, & Switches

## Screw Type (Cage-Clamp Design) Connectors

### Series 950

[Model : 950/2, 950/3]



### TECHNICAL SPECIFICATIONS :

Pitch	: 9.50 mm
Nominal Rating	: 30A/600V
Dielectric Strength	: > 2kV
Moulded Material	: PA66 - UL94 V0 or V2
Insulation Resistance	: > 1000 M Ω @ 500 Vdc
Terminal	: Tin Plated Copper Alloy
Wire Cage	: Nickel Plated Brass
Screw	: M3 x 0.50 mm : Brass Nickel Plated Suffix "P" : MS Trivalent Zinc Plated Suffix "C"
Wire Size	: 3.00 mm <sup>2</sup>
Maximum Torque	: 0.60 - 0.65 Nm

### ORDERING CODE

Series	Poles	Grade
--------	-------	-------

→ 950/2 P ←

Number of Poles: 2 or 3

Grade : P or C

P = Professional Grade

C = Economy Grade

### Approval Data

UL : Under Testing

cUL : Under Testing

CE : 600V / 30A / 26-10 AWG